

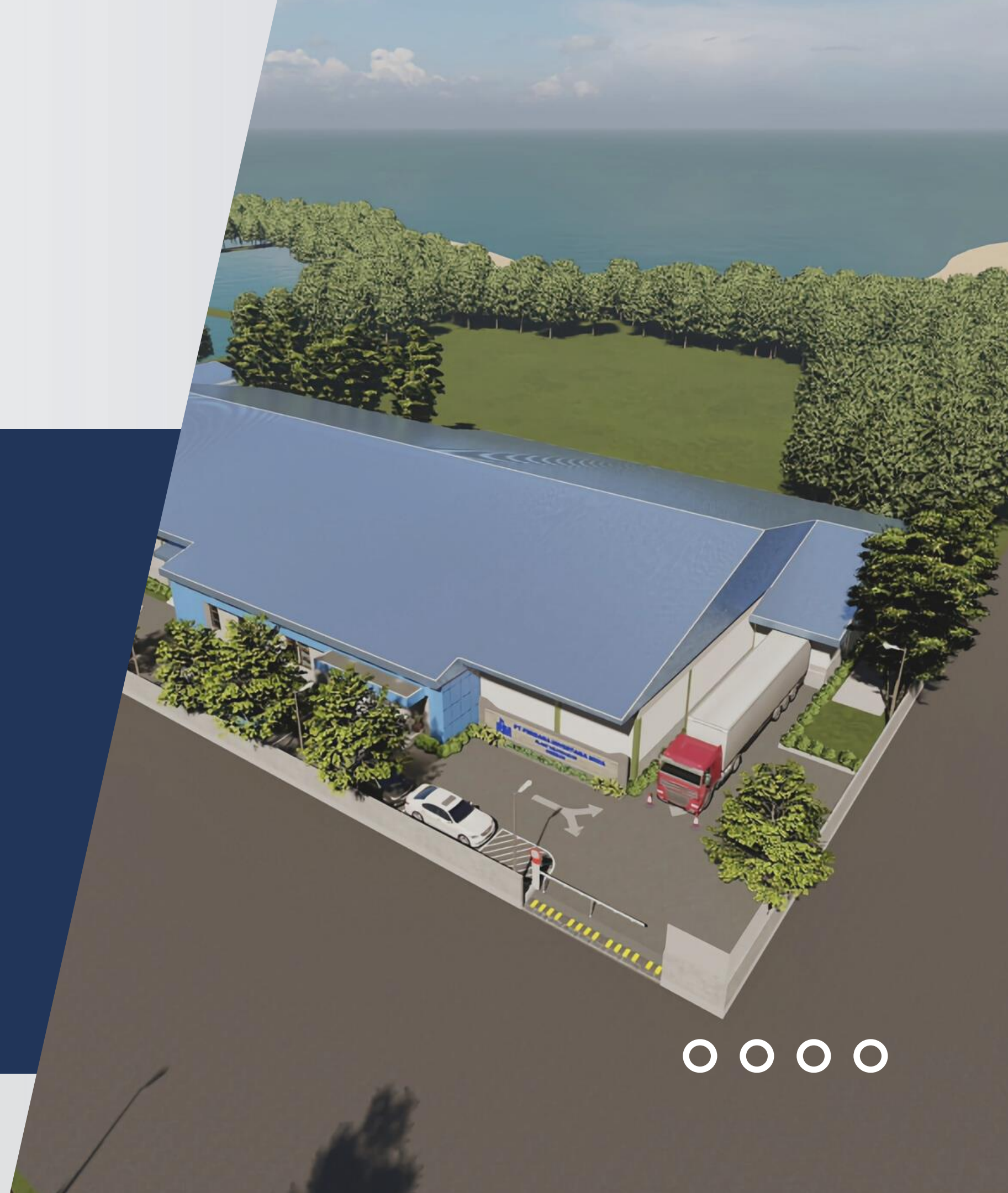
# PERDANA





# TABLE OF CONTENTS

- ❖ **Company Policy & Vision**
- ❖ **Geographical Location & Background**
- ❖ **Perdana Products**
- ❖ **Facility**





### Our Company Policy

To ensure food safety, maintain excellent quality products and guaranteed authenticity of raw materials and products, according to our customer requirements and comply with applicable laws and regulations.

### Our Vision

To be Recognized as valued partner in fishery business across the World

### Our Mission

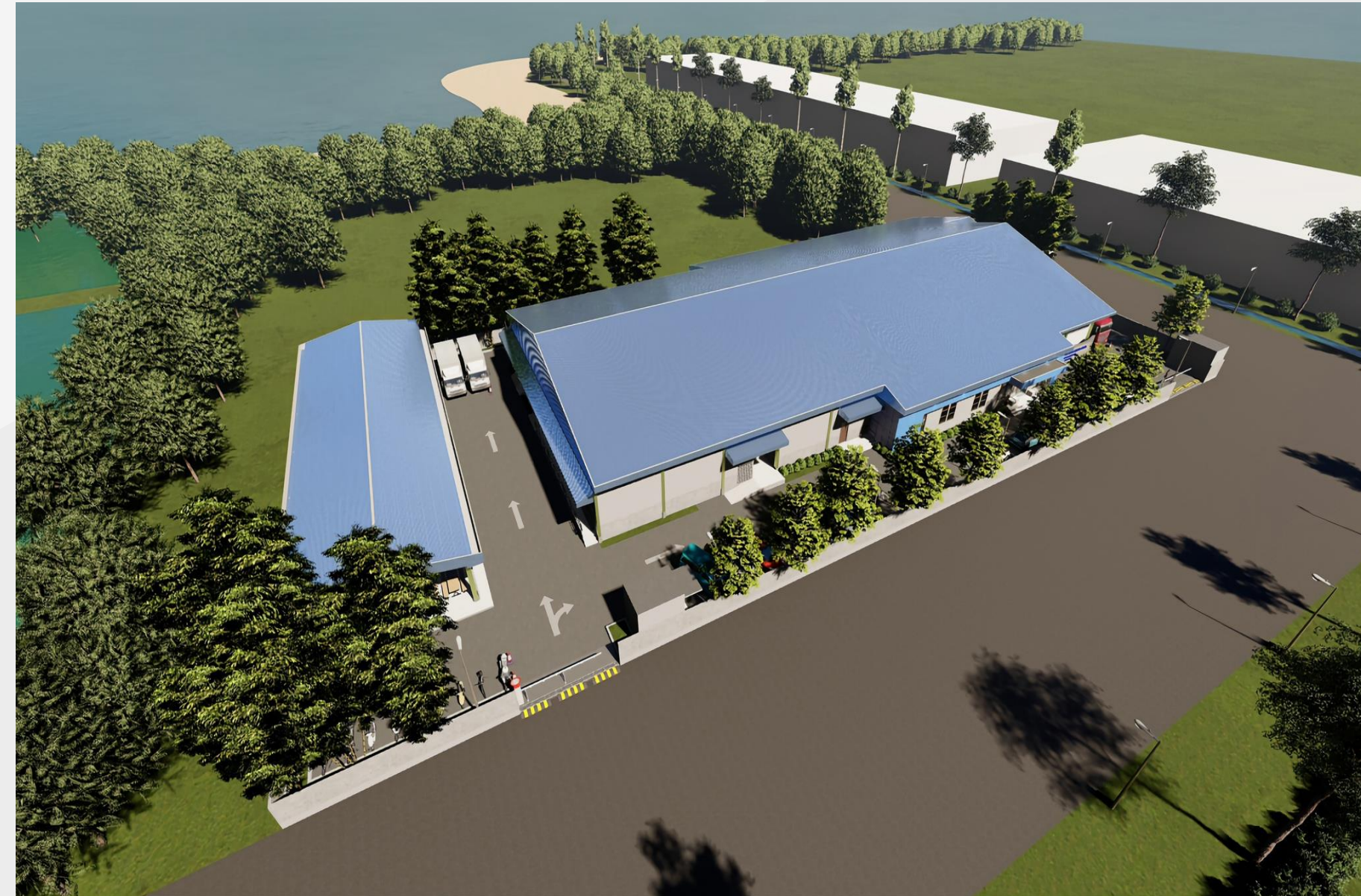
- Focus on Customer's Need for Solutions
- Develop Synergy and create Added Value
- Uphold Customer's Trust through Quality Performance





# WHY CIREBON

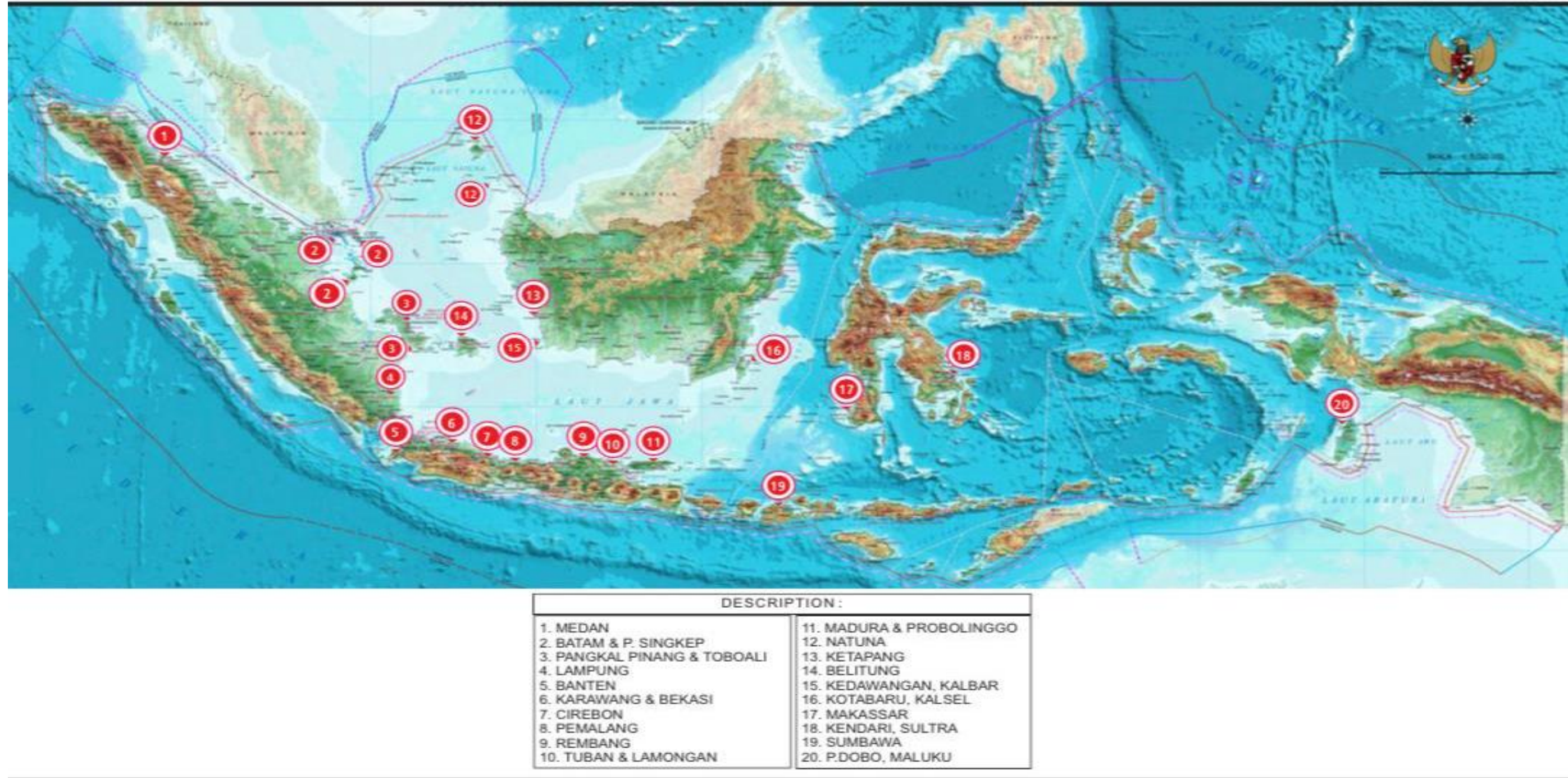
- ❖ Located in the heart of the largest fishing communities in java
- ❖ Availability of experienced pickers
- ❖ Easy access through toll road to port
- ❖ Safe location inside government fishery compound





o o o o

# Our Suppliers





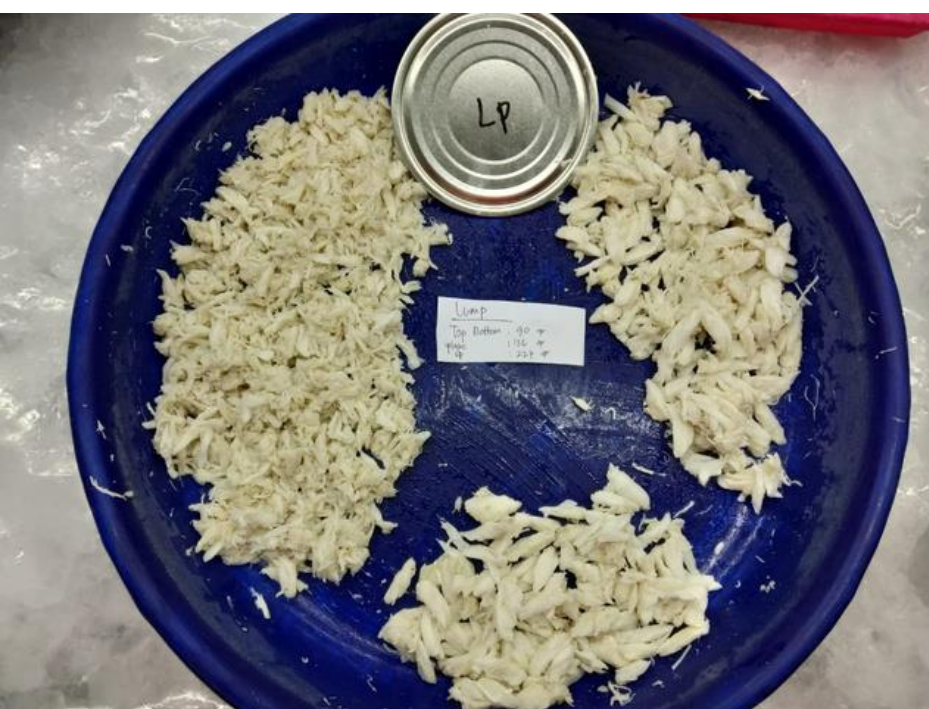
# OUR PRODUCTS

- ❖ Pasteurized Crab (Can, Pouch & Cup)
- ❖ Frozen Cephalopods
- ❖ Value Added





# PASTEURIZED CRAB





# FROZEN SQUID

## ❖ Squid

- ✓ Whole Clean IQF
- ✓ Tube IQF
- ✓ Tube & Tentacle IQF
- ✓ Tube SIQF
- ✓ Tube & Tentacle SIQF
- ✓ Ring Skin On
- ✓ Ring Skin less





# FROZEN CUTTLE FISH

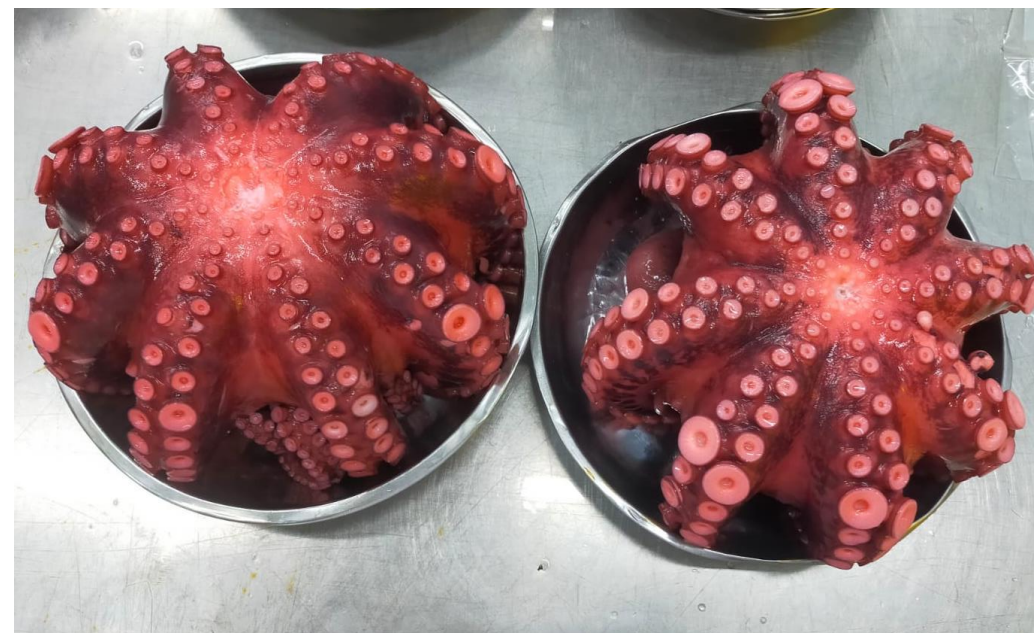
- ❖ **Cuttle Fish**
  - ✓ **Whole Clean**
  - ✓ **Fillet SIQF**
  - ✓ **Tentacle BF**





# FROZEN GIANT OCTOPUS

- ❖ **Giant Octopus**
  - ✓ **WR Ball Type**
  - ✓ **WR Flower**
  - ✓ **WC Ball Type**
  - ✓ **WC Flower Blanching**
  - ✓ **WC Block**





# VALUE ADDED







PERDANA FACTORY







# PERDANA FACTORY FACILITY

- ❖ Process Crab Pasteurized & Frozen Seafood
- ❖ 10.000 m2
- ❖ US FDA, GMP, SSOP, HACCP, Halal, BRC Certified
- ❖ 550 workers
- ❖ 2 Chill Storage & 2 Frozen Storage with total 100 ton capacity each





# ENVIRONMENTAL SOCIAL AND GOVERNANCE

- ❖ Installation of solar panels to reduce carbon usage
- ❖ Foster partnership and relation with local communities through certified fishery process training center
- ❖ Ethical business practice







## FACTORY FACILITY

- ❖ 5 tons perday  
(Cephalopod)
- ❖ 3 tons perday (crab)
- ❖ Contact Plate system
- ❖ Combined Storage of  
200 Tons





# PROCESS ROOM

- ❖ Pasteurized Crab
- ❖ **Grading**
- ❖ **Black Lamp**
- ❖ **Mixing**







# PROCESS ROOM

- Frozen Seafood
- ❖ Soaking
  - ❖ Weighing
  - ❖ Panning
  - ❖ Contact Plate Freezer





# Our Partners

- ❖ **Philips Foods**
- ❖ **Heron Point**
- ❖ **Samuel's and Sons**
- ❖ **Atlantica Imports**
- ❖ **IMAEX**
- ❖ **Aquastar**
- ❖ **Seattle Shrimp and Seafood**
- ❖ **Alimentos Del Mar**





# THANK YOU

## OFFICE



Jl. Pelabuhan Perikanan No.1, 45112  
Pegambiran, Cirebon, West Java



Nizam Achmad  
Board Of Trustees  
+62 856-7892-436  
achmad.nizam@perdanamina.com



[www.perdanainvestamamina.com](http://www.perdanainvestamamina.com)

